



MICRO-GOBETIS 3000

DASH-BOND COAT FOR LOW POROSITY/HIGH ABSORPTION/SMOOTH SURFACES E.G. CONCRETE AND LIGHTWEIGHT BLOCKWORK

DESCRIPTION

- Enhances bonding of one-coat renders to substrates.
- Reduces the risk of air pockets in render.

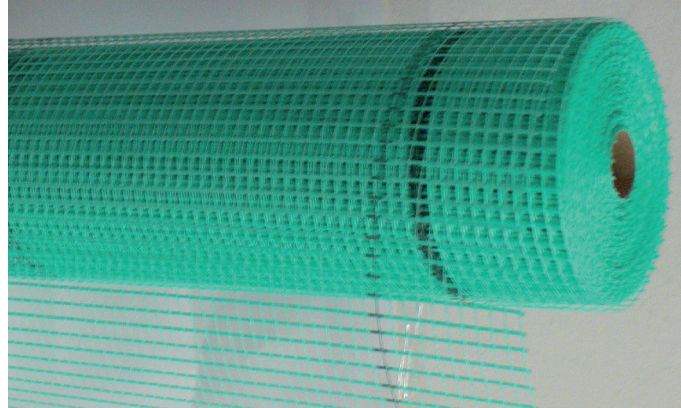
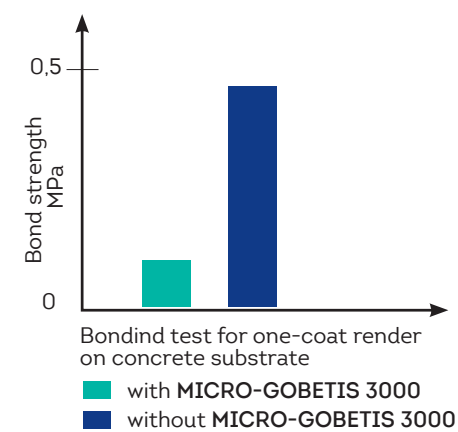
PERMISSIBLE SUBSTRATES

- Smooth, low-absorbency substrates such as concrete and certain float-finished mortars.

APPLICATION

- Apply in one single coat with a roller or brush.
- One-coat render can be applied as soon as **MICRO-GOBETIS 3000** has dried, i.e. after 1 to 24 hours, depending on weather conditions.
- Mix the product thoroughly before use to ensure an even consistency.

PERFORMANCES



TV10 FIBREGLASS MESH

FLEXIBLE REINFORCING FIBREGLASS MESH

DESCRIPTION

- Alkali-resistant fibreglass mesh for the reinforcement of hydraulic rendering systems.
- **TV10 FIBREGLASS MESH** reinforces the base coat in order to reduce the risk of microcracking.
- It is compatible with all rendering systems in both new build and renovation work.

PROPERTIES

- High mechanical strength.
- Excellent dimensional stability.
- Due to its large mesh size, **TV10 FIBREGLASS MESH** is reliable reinforcement for external façade renders.

APPLICATION

- Apply a base coat of render to the entire façade.
- Embed the fibreglass mesh into the base coat, working from the top of the wall downwards and from the centre to the sides.
- When applying a second strip of mesh, overlap the edges of the first strip by at least 10 cm to ensure reinforcement continuity.
- Apply a second coat of render.



For full technical information please consult the PAREXLANKO Technical Data Sheets.
If you would like project-specific specifications, please contact PAREXLANKO.

PAREXLANKO

PARTNER FOR YOUR FINEST WORK

Parexlanko is the commercial brand of ParexGroup S.A. in France
PAREXGROUP S.A. Export Department

19, place de la Résistance - CS 50053 - 92445 Issy-Les-Moulineaux Cedex France - Tél. : (33) 01 41 17 20 00

More information on [parexlanko.com](https://www.parexlanko.com)

PAREXLANKO

PARTNER FOR YOUR FINEST WORK

RENDER SYSTEMS & FAÇADE SOLUTIONS

CREATING COLOUR AND FINISH BY DESIGN

RESSOURCES GRAPHIQUES / June 2017 - DO NOT THROW ON THE PUEBLO HIGHWAY



MONOREX GM / GF

STANDARD FINISH ONE-COAT THROUGH
COLOURED ONE-COAT THROUGH WEATHER
RESISTANT DECORATIVE RENDER
48 STANDARD COLOURS
SPECIAL COLOURS TO ORDER

DESCRIPTION

- One-coat, semi-light OC1 render for waterproofing and decorating exterior and interior masonry or concrete walls.
- Through-coloured one-coat render.

PERMISSIBLE SUBSTRATES

- Approved masonry – Rt1, Rt2 & Rt3 (see DTU 20.1)
- Shuttered concrete walls (see DTU 23.1)
- Approved rendering (see DTU 26.1)
- Base coats:
MONOGRIS E, TRADIREX, TRADIDUR, PARMUREX, PARMUREX SANS POUSSIÈRE.

NON-PERMISSIBLE SUBSTRATES

- Rough-cast or plaster rendered constructions.
- Exposed vertical substrates with a backward incline above 10°.

FINISHES

- Medium Scraped (GM)
- Fine Scraped (GF)
- Sponge or Float Smoothed
- Trowel Smoothed
- Spray Textured from tyrolean to heavy roughcast effect.



MONOBLANCO

BRIGHT WHITE ONE-COAT WEATHER RESISTANT
AND DECORATIVE MONOBLANCO RENDER

DESCRIPTION

- Semi-light, one-coat OC1 render for waterproofing and decorating exterior and interior masonry or concrete walls.
- Colour: white (BL10).

PERMISSIBLE SUBSTRATES

- Approved masonry – Rt1, Rt2 & Rt3 (see DTU 20.1)
- Shuttered concrete walls (see DTU 23.1)
- Approved rendering (see DTU 26.1)
- Base coats:
MONOGRIS E, TRADIREX, TRADIDUR, PARMUREX, PARMUREX SANS POUSSIÈRE.

NON-PERMISSIBLE SUBSTRATES

- Rough-cast or plaster rendered constructions.
- Exposed vertical substrates with a backward incline above 10°.

FINISHES

- Scraped
- Sponge or Float Smoothed
- Trowel Smoothed
- Spray Textured from tyrolean to heavy roughcast effect.



MONOGRIS E

ONE-COAT SEMI-LIGHT WATERPROOFING RENDER
BASE COAT

DESCRIPTION

- Semi-light OC1 base coat or top coat for waterproofing interior and exterior walls.
- **MONOGRIS E** can be left bare.
- Colour: grey.

PERMISSIBLE SUBSTRATES

- Masonry compliant with building regulations in force (e.g. French DTU 20.1): concrete blocks (Rt3, Rt2), brickwork (Rt3, Rt2), cellular concrete (Rt1)
- Shuttered concrete walls (DTU 23.1)
- Stone masonry and breezeblocks.

NON-PERMISSIBLE SUBSTRATES

- Rough-cast or plaster rendered constructions.
- Exposed vertical substrates with a backward incline above 10°.

SUITABLE COVERING MATERIALS

- Semi-light PAREXLANKO renders:
MONOREX GM, MONOREX GF,
MONOBLANCO, PARLUMIÈRE FIN,
PARLUMIÈRE MOYEN, PAREXAL.
- Paint, whitewash or acrylic-based coatings.



PARMUREX

ONE COAT WEATHER RESISTANT GREY RENDER
CAN BE USED AS A FINISHING COAT
NOW WITH DUST REDUCTION : PAREMUREX SANS
POUSSIÈRE

DESCRIPTION

- Heavy OC3 base coat or top coat for waterproofing interior and exterior walls.
- **PARMUREX** can be left bare.
- Colour: grey.

PERMISSIBLE SUBSTRATES

- Concrete block masonry (Rt3) compliant with building regulations in force (e.g. French DTU 20.1)
- Shuttered concrete walls (compliant with DTU 23.1)
- Stone masonry and breezeblocks.

NON-PERMISSIBLE SUBSTRATES

- Rt1 and Rt2 masonry, brickwork
- Old, weakened substrates
- Rough-cast or plaster rendered constructions
- Exposed vertical substrates with a backward incline above 10°.

SUITABLE COVERING MATERIALS

- Finishing render or one-coat render
- Terracotta facing boards (10 mm wide joints)
- Tiles (joint ≥ 6 mm)
- Paint, whitewash or acrylic-based coatings.



PARINTER RENOVATION

PREPARATORY BONDING COAT FOR RENDERING
ONTO EXISTING PAINTED MASONRY OR RENDER

DESCRIPTION

- A restoration and bonding mortar for the renovation of old hydraulic cement or lime based renders, sound or cracked but not delaminated, including render or masonry that has been painted or has received a thick textured coating system. Only the addition of clean water on site is required. Designed to create a new base coat render suitable for taking a range of decorative finishes including: decorative coatings, decorative top coat renders and finishes.

PROPERTIES

- Its composition and adhesion properties make it compatible with a large number of non porous or smooth substrates (painted surfaces, hydraulic renders or concrete).

PERMISSIBLE SUBSTRATES

- Sound rendered masonry including those with a thin paint coating < 300 µ (pliolite, acrylic based coatings) or with a thick acrylic covering which has passed preliminary bonding tests
- Sound concrete
- Brick and block masonry
- Sound and well bonded
- Sandstone or Terracotta tiles
- Always carry out preliminary checks of the substrate and prepare thoroughly in accordance with the technical specification information.



238 HYDRORESIST

WATER-REPELLENT SURFACE TREATMENT
DOES NOT ALTER SURFACE APPEARANCE
EASY APPLICATION

DESCRIPTION

- **238 HYDRORESIST** is a ready-to-use aqueous phase water-repellent surface treatment containing both silanes and siloxanes. It migrates by capillary action into the substrate and provides long-lasting protection.
- **238 HYDRORESIST** does not alter the initial appearance of the substrate.

USES

- **238 HYDRORESIST** is intended for the protection of facades and other vertical surfaces, but also for terraces, swimming pool surrounds and roof tiles.
- Protection of wall and floor substrates such as:
 - smooth concrete, exposed aggregate concrete
 - hydraulic mortar and render
 - stoneware
 - bricks, tiles, terracotta tiles
 - natural and synthetic stone, reconstituted stone
 - concrete slabs and paving stones
 - joints between stones, bricks and tiles.



MONOBLANCO

BL10

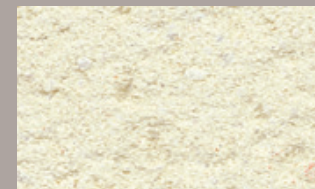


MONOREX GM / GF

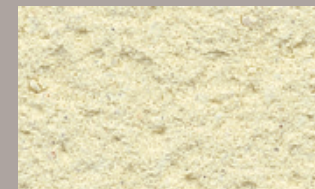
G00 Natural White



G20 Off White



J20 Pale Yellow



- PAREXLANKO offers a comprehensive range of 48 standard and specialist bespoke colours.
- All colours in the range may be available on a range of PAREXLANKO renders, except the colour BL10 which is only available for the render products MONOBLANCO.
- Prior to commencement on site, it is recommended that a test panel is produced for inspection to qualify the finish, texture, colour and appearance of the render.
- The colours shown are indicative only and should only be used as a reference guide.
- PAREXLANKO can provide colour samples for planning applications or for design consideration. These are generally available in a scraped finish. Other finishes can be provided to order.

- Ready to use products - only the addition of clean water required
- No painting required on top coat products, e.g. MONOREX GM / GF
- Compatible with a range of substrates - Obtain a specification from PAREXLANKO first
- Top coat renders can act as a base coat for the PAREXLANKO acrylic finishes
- A comprehensive range of textures and finishes can be achieved

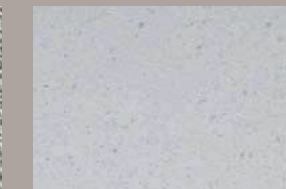
SMOOTH SPRAY TEXTURED



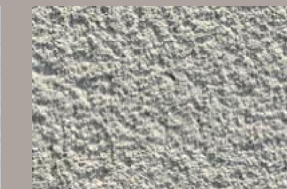
FINE SCRAPPED



SPONGED



SCRAPPED



TEXTURED

